

# PLAT No. 1

(A PLANNED UNIT DEVELOPMENT)

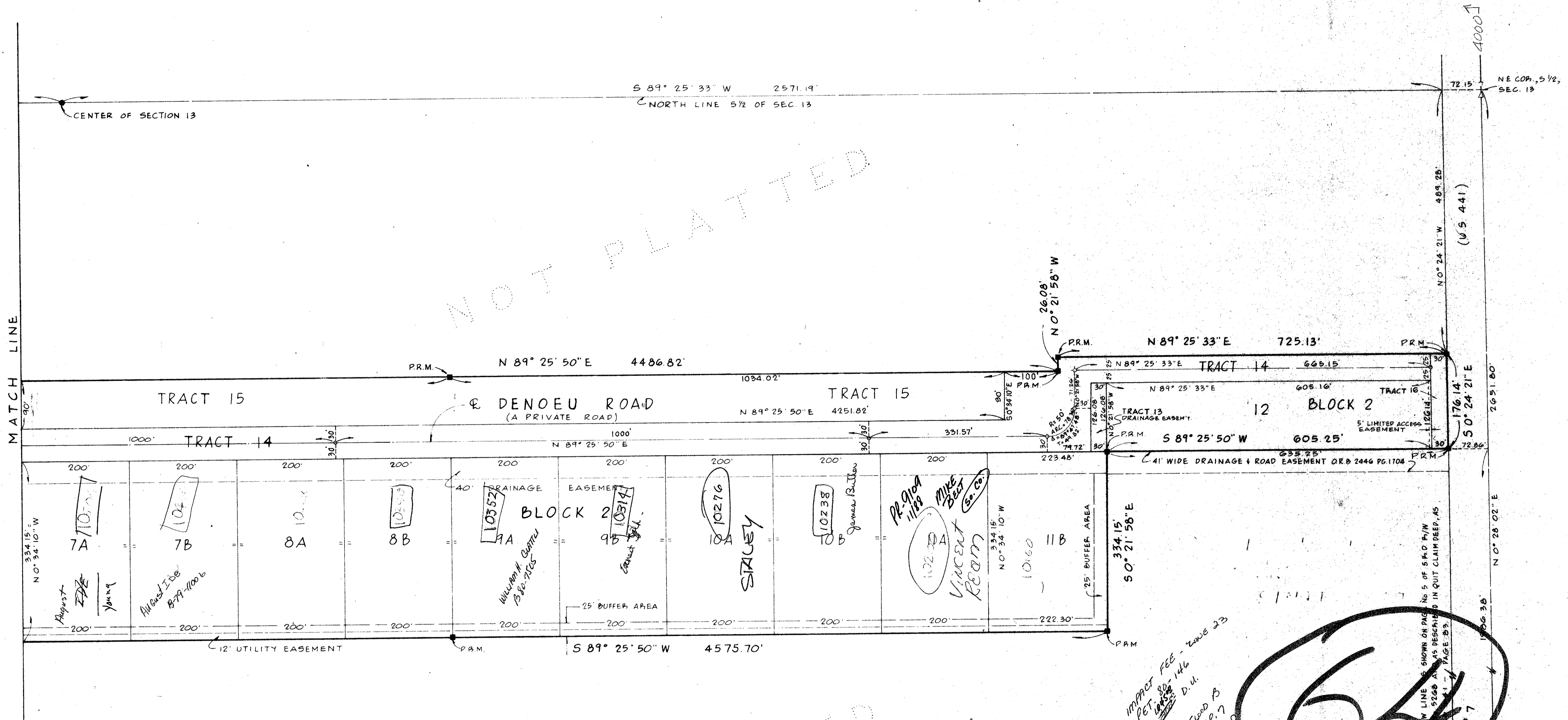
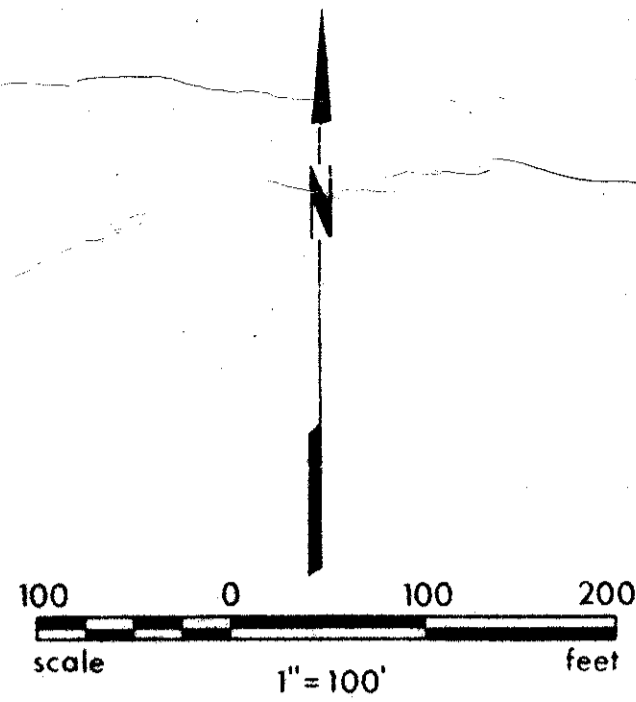
## WILLIS GLIDERPORT

BEING A SUBDIVISION OF A PORTION OF THE S 1/2 OF SECTION 13, TOWNSHIP 45 SOUTH, RANGE 41 EAST PALM BEACH COUNTY, FLORIDA

IN 3 SHEETS SHEET NO. 3

FEBRUARY 1977

# 148



NOT PLATTED

NOT PLATTED

IMPACT FEE - Zone 23  
PET. 88-146  
D.U.  
Flood B  
INSR. 7  
RE/PUD

64

1000-156

13/45/41

32

148

# WILLIS GLIDERPORT

FR. 88-146  
STAMPED 18 11